

2016 New Beginnings Family and Children Services Placement Report





New Beginnings

Family and Children's Services, Inc.

International Adoptions from China, Thailand and Korea

Our international adoption programs are long established and reliable. New Beginnings' Family Centered Approach and mission is to find orphaned and displaced children permanent loving homes by providing quality and compassionate social services through the adoption process and after the child is placed.

Korean Children Need Families

We need families for healthy Korean children for the coming year. The Korean program is still one of the best international adoption programs available. Families were often able to bring their child home in 18 months.

Post Adoption Services

In 2016, New Beginnings' Beyond the Placement Program received 35 search requests, and 21 families were reconnected. 8 families had visits and 4 birth mothers were reunited with their child.

Special Focus Children

New Beginnings placed 22 "special focus children" in 2016 and provided \$31,000 in Beyond the Placement grants.

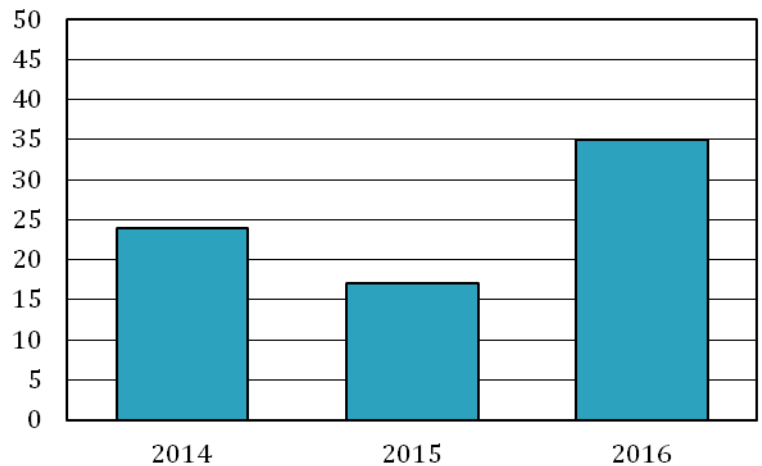
Your Donations Keep Us Going

New Beginnings needs donors like you to help us continue to make a difference in children's lives around the world. New Beginnings is a 501(c)(3) not-for-profit organization.



International Adoption Placements

Placements from 2014-2016

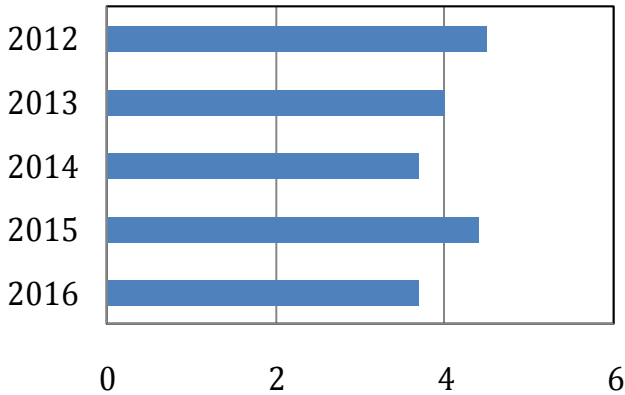


- Just over 100% increase in placements in 2016.
- The average age of the children placed in 2016 was 5 years, 3 months.
- New Beginnings had no complaints in the previous ten years.
- New Beginnings had no disruptions in the last three years.
- New Beginnings had 44 Applications in 2016, 60 in 2015 and 38 in 2014.

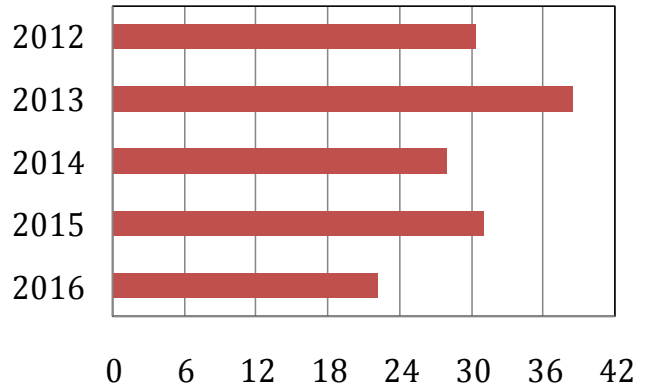


How Long does it Take?

Contract to Home Study by Month



Home Study to Placement by Month



Age at Placement (months)	
2012	48
2013	50
2014	50
2015	62
2016	63

New Beginnings' Home Studies took an average of 3 months to complete.

